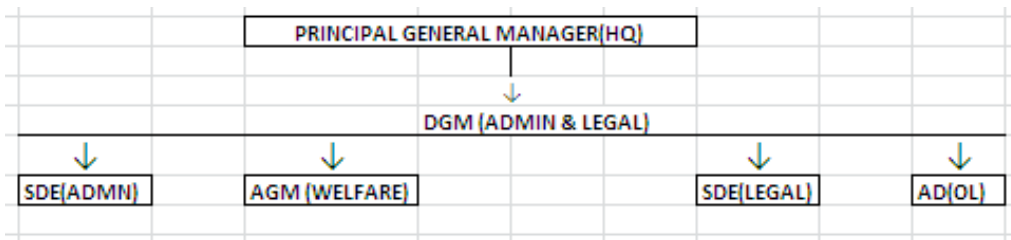
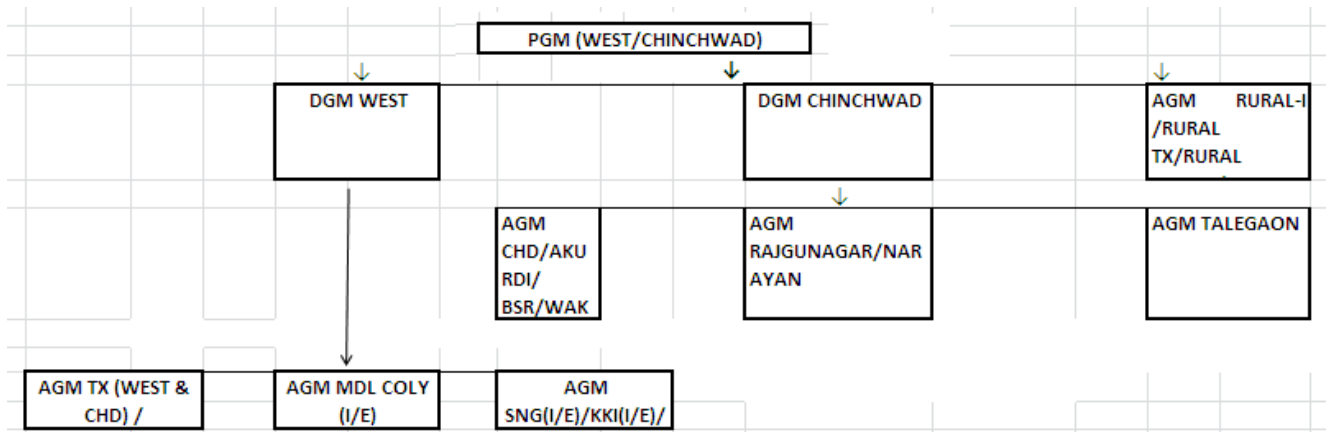


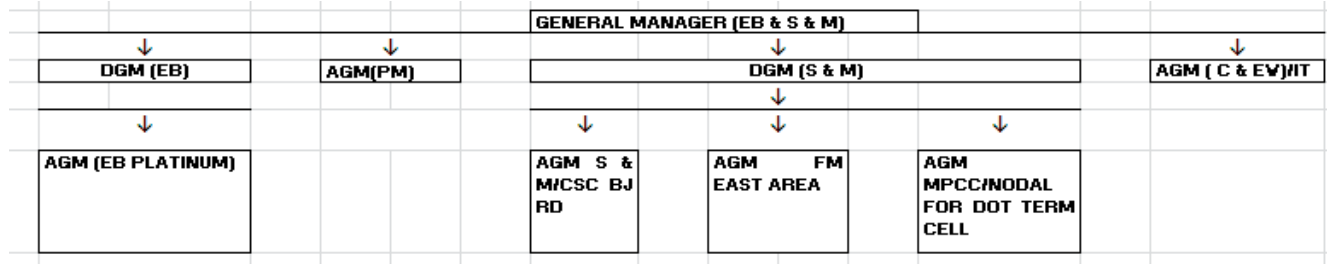
PRINCIPAL GENERAL MANAGER((HQ)



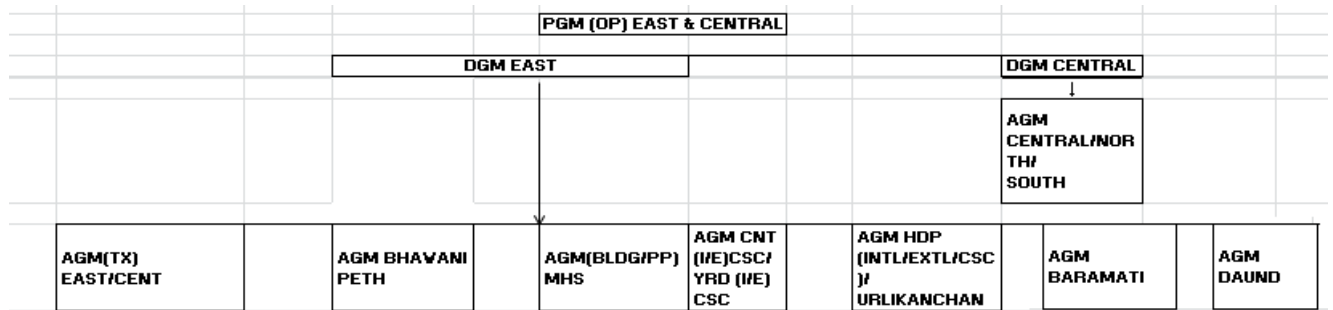
PRINCIPAL GENERAL MANAGER((WEST/CHINCHWAD)



GENERAL MANAGER (EB & S & M)



PRINCIPAL GENERAL MANAGER (OP) EAST & CENTRAL



PRINCIPAL GENERAL MANAGER (NETWORK)

